

ANNUAL REPORT

(2022-2023)



N I S W

(An Association of Social Action & Development)

NATURAL INSTITUTE FOR SOCIAL WELFARE

*AT-KUSUNUPUR, PO/PS-JAJPUR RAOD, DIST-JAJPUR
ODISHA - 755019, Ph-9338466222, 8763338101*

Field Office Address: AT- NUAGAON, PO-DANAGADI, DIST-JAJPUR, 755026

PREFACE

*NISW presents its 28th Annual Report from the period April 2022 to March 2023 with sense of pride. This report includes the out gone events, activities, achievements. This also attempts to place ongoing activities under taken by the Organization and some planned programme proposed to be implemented. Keeping its own vision & mission, NISW marches forward in the field of social welfare & development. It is very open we have not achieved what we have planned for the people. As an implementing agency what we can do for the deserving and worst sufferer vulnerable groups and individuals except external co-operation & support only. NISW gained confidence & courage from the people to do more work together. We enjoy much more happiness for their affection, co-operation & love. In spite of several obstacles, critical challenges and problems of NISW has not lost its good name and not missed its philosophy "**Service is Divine**".*

NISW being trying over one decade to reach before the poor, Vulnerable and tribal community those who are struggling hard for their survival. To help them in their initiatives, we have come across a lot of struggle and ups & downs, which has paved the way towards success.

*Contribution of staff, our donor agencies, Govt. official, Like-minded NGOs are unspeakable in words. The participation of the beneficiaries is needed to counted & placed here too. NISW has now beautiful grown with a structured management and dedicated volunteers and professional team. We well come all our partners to step at **NISW** and help us to help the **poor**.*

With this reality we seek all your humanitarian help for the betterment of tomorrow.

With kind regards.

PABITRA MOHAN SAHOO
DIRECTOR, NISW

ABOUT NISW

Norms Compliance NISW Society is registered under the legalities of

- **Registration No. 19412/26 OF 1993-94 Under Society registration Act.**

ANNUAL REPORT 2022-23 OF NISW, JAIPUR

Page 2

- **Section 12A of Income Tax Act 1961 on 2.08.1999 (Reg. No- 16/1999-2000).**
- **Section 80G of the Income Tax Act 1961 on 24th April,2003 (Reg. No-**

STRATEGIES

A. Institutional strengthening

- ❖ Capacity building
Training for staffs
- ❖ Strategic Planning of
Programme and
Activities
- ❖ Establishment of
administrative system
with management
advice
- ❖ Research
&documentation
- ❖ Sensitization meeting
- ❖ Field monitoring
- ❖ Enhanced programme
and financial
management.
- ❖ Safe Workplace &
Gender Policy
- ❖ Procurement Policy

B. Participatory activity

- ❖ Human resource
development and
community
involvement in the
Programme
- ❖ Public & media
Communication
- ❖ Resource Mobilisation
- ❖ Advocacy with key
stake holders.
- ❖ Child welfare Policy

C. Financial Planning

- ❖ Micro Action plan
approved by Project
head
- ❖ Management and
Accounting

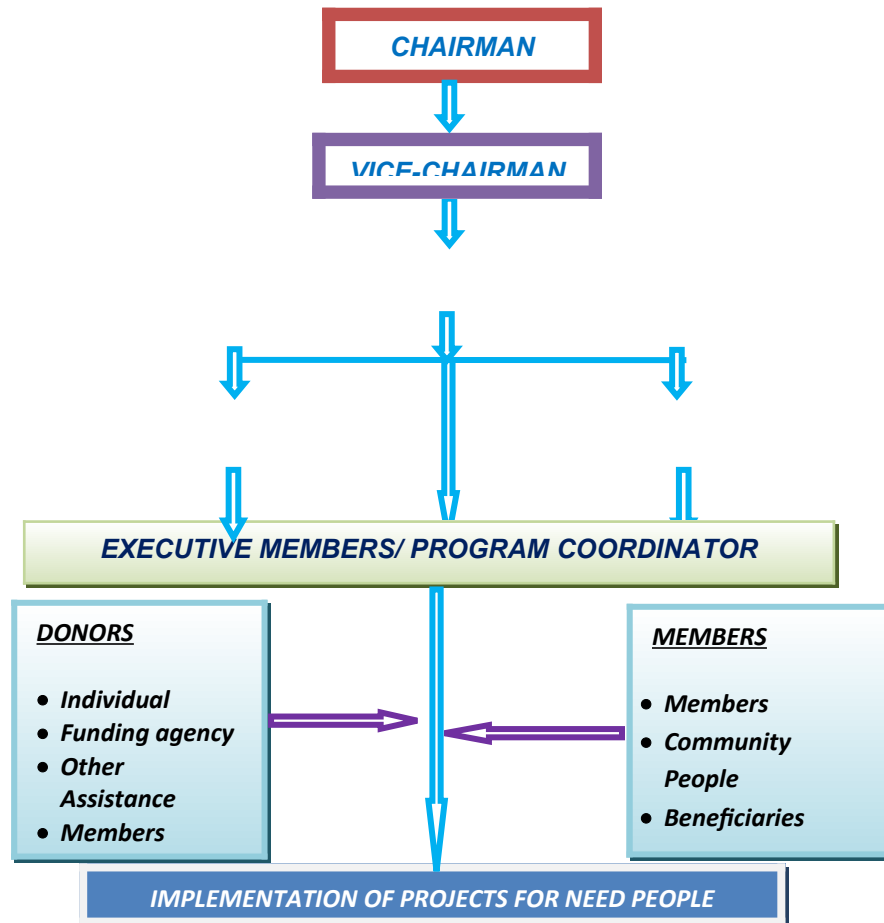
OBJECTIVES

- ⇒ To create leadership among them who can act as change agents to manage individual and community matters and in turn can bring transformation in the social, economic and political milieu of the community.
- ⇒ To achieve self-sufficiency by judiciously using and preserving locally available resources for the sustainable future.
- ⇒ To increase the regenerating and craving capacity of the area by not only preserving eco-system but also by promoting eco-friendly activities like social forestry and agro-forestry.
- ⇒ To creating a sense of identity, a sense of importance, a sense of development and confidence among local inhabitants especially women through programmes of awareness not only on health, sanitation, education but also on duties & responsibilities of people relating to these.
- ⇒ To strengthen & empower the needy helpless destitute women & children, people's Organization, Service to elderly & develop primary education for SC, ST children.

OUR STRENGTH

- Qualified & Experienced Staffs
- Experienced Volunteers
- Training equipment with teaching & Learning facilities
- Clinical Health instrument & IEC material
- Separate Hostel & Accommodation facilities
- District Training site with Computers, VCD, Light & sound, Cameras, Mini Projector etc.
- Member of Rogi Kalyan Summit , Sukinda, Danagadi CHC
- Member of RPDAC, Kalinganagar & RPDAC, Sukinda Mines

ORGANIZATION STRUCTURE



• **Health**

- Awareness on HIV/AIDS
- Maa Gruha
- Urban Health Programme

• **Women Empowerment**

- SHG formation & development of leadership.
- SHG formation towards Self sustainability & Agricultural Development.

• **Social Welfare**

- Swadhar Greh/ Shakti Sadana
- Child Care Institution (CCI) for orphan child.
- One Stop Centre/ Sambal
- Childline, 1098

ABSTRACT OF FUNDS AND PROGRAMMES OF NISW

SL. NO	TITLE OF THE PROJECT	DURATION	SOURCE OF FUNDING	LOCATION OF THE PROGRAMME	BENEFICIARIES
--------	----------------------	----------	-------------------	---------------------------	---------------



Induction Training Programme for Elected PRIs

NISW conducted Induction Training for PRI Members for Ward Member in Danagadi, Sukinda, of Jajpur District ,which is funded by DRDA, Jajpur & SIRD Govt. of Odisha. Batch wise training conducted and 3 days per batch. Fooding, TA & Training kit provided to Trainees for participating the training programme. Total 604 number of ward members has trained in this programme and the total programme expenditure is



TI PROJECT FOR MLs & TRANSIT POINTS

As now HIV/AIDS is not a health issue it is a development issue because most of the young people are affected by HIV. To halt the epidemic of HIV/AIDS NISW has been implemented TI project (s) with help of OSACS since 2nd March 2009. First we started TI projects for Migrant labours in Kalinganagar Industrial Area for 5000 populations & now we are working for 15000 populations & for out/in going labours in railway station Transit point since 1st SEP 2011.

OBJECTIVE

COMPONENT

GOAL

To halt & reverse the epidemics in our implemented area.

TARGET POPULATION

- MIGRANT LABOURS.
- ALL OUTGOING AND INCOMING MIGRANTS.





TI PROJECT FOR FSW, MSM & TG (CORE GROUP)

To halt the epidemic of HIV/AIDS NISW has been implemented TI project (s) with help of OSACS TI project has been implemented for FSW, MSM & TG in Jajpur Road, Panikoili, Duburi, Danagadi, Manpur area for 250 populations since 16th DEC 2010 and add 450 FSW from 1st July 2014 for Kaliapani area & for 100 MSM/TGs community since 1st April 2012.



GOAL

To halt & reverse the epidemics in our implemented area.

TARGET POPULATION

- Female Sex Workers
- Men Sex with Men
- Transgender

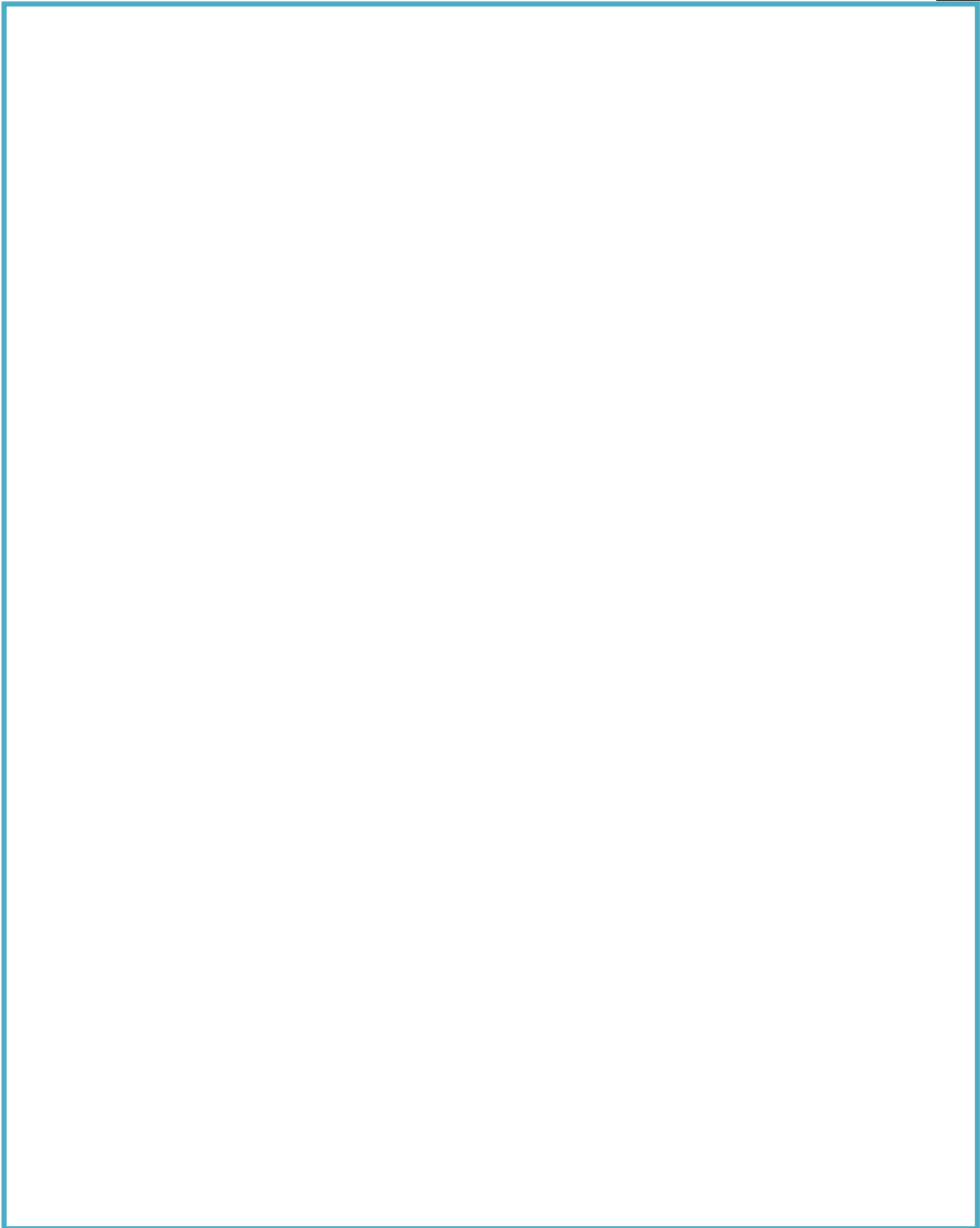
OBJECTIVE

- Prevention of new Infection
- Increased Proportion of PLHIV receiving care support & treatment
- Strengthening Capacities at District, State & National Level
- Building Strategic Information Management

COMPONENT

- Community mobilization
- Enabling Environment
- Condom Promotion
- STI Management
- BCC
- Referral Linkages





Swadhar Shelter Home has been implemented since March 2009 for immediate rescue & support to destitute helpless women & Children who are living with difficult circumstance. This programme is supported by Min. of Women & Child Development, Gov of India.

OBJECTIVE OF THE HOME

- Rescue & rehabilitation
- Skill development for self employment
- Healthy & self esteem life
- Main streaming of distress women & their child

AIM OF THE PROGRAMME

To give temporary shelter to the distress women & her child & make her rehabilitation in the society with self esteem & give counseling to all women in need.

ACTIVITY

- Shelter
- Counseling
- Health facility
- Yoga
- Recreational Activity
- Vocational Training
- Legal Advice
- Rehabilitation
- Nutrition
- Production Activity

ACHIVEMENT

Habitat- 29 women, 18 children

Rehabilitation- 41

Counseling- 27

Trainina- 27



ANNAPURNA CHILD CARE INSTITUTION

NISW has been running ANNAPURNA CHILD CARE INSTITUTION (CCI) since 1st April 2012 AT-NUAGAON, PO-DANAGADI, DIST-JAJPUR-755026. Children are the most vulnerable group of the society who are very often subjected to torture, harassment, and abuse or neglected by the society as they are too young to fight for their rights. In many



AWARENESS PROGRAMME

WORLD AIDS DAY

NISW also has been conducting various awareness programme in Jajpur town of Jajpur District. In the year 2021-22 we conducted awareness through,

- ❖ Rally
- ❖ Folk Show
- ❖ Discussion
- ❖ General Meeting
- ❖ Signature campaign
- ❖ IEC Stall

We conducted awareness programme for Vasectomy & HIV/AIDS through mass rally, Folk Dance, Group Discussion, Meeting and IEC stall. We include Youth Club, School & College Students.



NISW has involved in Social Audit activity under MGNREGA with the help of DRDA & Block administration of Sukinda ,Danagadi & Korei block of Jajpur district, since 2017-18.



Latitude: 20.809601
Longitude: 86.24388
Altitude: 32.0125 m

LIVELIHOOD ACTIVITY

NISW emphasize the SHG (Self Help Group) for cultivation of potential of yield increase, water saving and enhanced food security for small and marginal female farmers through paddy, vegetable cultivation, kitchen garden etc. Low cropping intensity of farming, poor average rice yield and large extent of small land holdings of rain fed farming in Danagadi & Sukinda Block of Jainpur district. Like SRI,



MATERNITY WAITING H



Communication hinders transportation of expectant Mothers to health facility. Suitable place & cost factors involved in staying outside home because of their poor economic status. So, in spite of provision of health services, the number of women reported to have increased.

Through establishing MAA GRUHA (Maternity Waiting Home) in remote areas. We are running the Home at Sukinda.

Structure for addressing communication problems in difficult and inaccessible pockets.

ultimately minimising maternal



community mobilization.

admitted at Maa Gruha before EDD.

of delivery, immunization, family planning, health & sanitation

from Maa Gruha to Public Health Facility for pregnant women.

audiovisual aids.

at any time to time



ONE STOP CENTRE (SAMBAL)

One stop centre works for the Violence against women. Now the women's & girls facing different problems like domestic Violence, sexual harassment, sexual assault, domestic violence, trafficking, honour related crimes, acid attacks or witch-hunting osc provides the following facility to Survivors.

- Emergency Response and Rescue Services
- Medical assistance
- Assistance to women in lodging FIR/ NCR/ DIR
- Psycho-social support/ counseling
- Legal aid and counseling
- Shelter

The objectives of the Scheme are: -

- To provide integrated support and assistance to women affected by violence, both in private and public spaces under one roof.
- To facilitate immediate, emergency and non-emergency access to a range of services including medical, legal, psychological and counseling support under one roof to fight against any forms of violence against women.



CHILDLINE . 1098

- The childline 1098 service was launched for child in need of care and protection in Jajpur district.
- Childline 1098 is a national 24hr free emergency phone and outreach service for children in need of care and protection.
- Childline started from 24th August, 2020 in Jajpur district.
- Childline works together with the Allied Systems (Police, Health Care, Juvenile Justice, Transport, Legal, Education, Communication, Media, Political and the Community) to create child friendly systems.
- To adapt and integrate telecommunication technology, linking all districts to the service of 1098, and making it available to all children in need of care and protection.

In this programme we have intervened 175 children those who are need care and protection and rescued 67 children and rehabilitated them. 166 Awareness meeting was conducted for the publicity of 1098 Toll-Free number & objectives of Childline.

